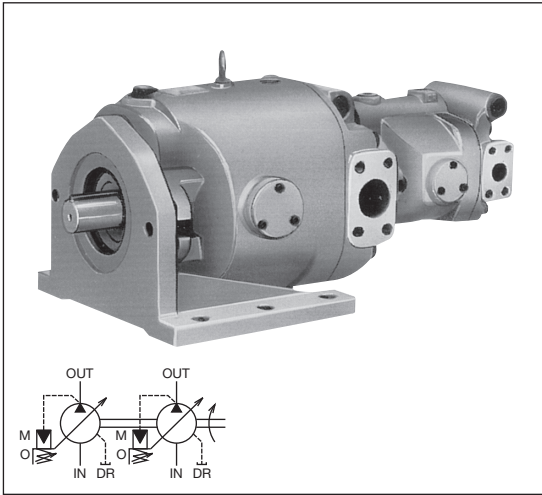


VARIABLE-DISPLACEMENT DOUBLE PISTON PUMP (HPP-VCC2V, HPP-VCF2V)

A

PUMPS AND MOTORS



Two variable-displacement pumps (HPP-VC2V-F14*-B, HPP-VF2V-F63A3-B) are assembled as a unit and driven by one motor. The fluid pumped from the two pumps can be delivered to separate circuits to drive individual actuators or can be converged to drive a single actuator.

■ Features

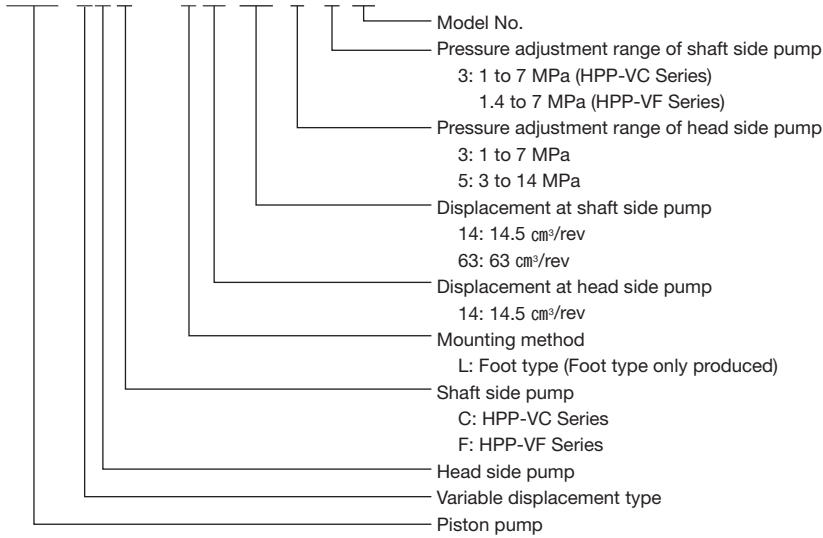
Space can be saved because the same shaft can drive two piston pumps.

⚠ Cautions on use Please read the Operating Manual carefully to ensure correct usage.

- The standard direction of rotation is to right (CW), viewed from the shaft end.
- Capacity of each pump is same as the single pump. Refer to A-20 and A-24 pages.
- The pump can be used for R&O type and abrasion-resistant type hydraulic fluid applications.
- Refer to the "Cautions on Using Pumps and Motors", A-2 and A-3 pages.

■ Description of the model designation

HPP-VCC2V-L14-14A3A3-B



■ Specifications

Model	Displacement (cm ³ /rev)	Pressure adjustment range (MPa)	Rotating speed (min ⁻¹)		
			Rated	Max.	Lowest
HPP-VCC2V-L14-14A3A3-B	^{*1} / _{*1} to 14.5	1 to 7 1 to 7	1,800	1,800	500
HPP-VCF2V-L14-63A3A3-B	^{*1} / _{*2} to 14.5	1 to 7 1.4 to 7			720
HPP-VCF2V-L14-63A5A3-B	^{*1} / _{*2} to 14.5	3 to 14 1.4 to 7			720

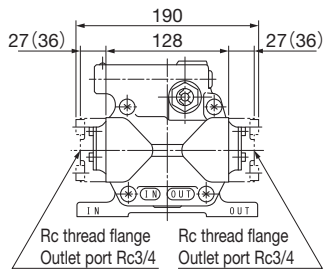
At the rated output, displacement volume and adjustment range, the upper row indicates the head-side pump, and the lower row indicates the shaft-side pump, for both maximum and minimum.

*1: Set the minimum discharge rate at 5 L/min. or more, regardless of rotating speed.

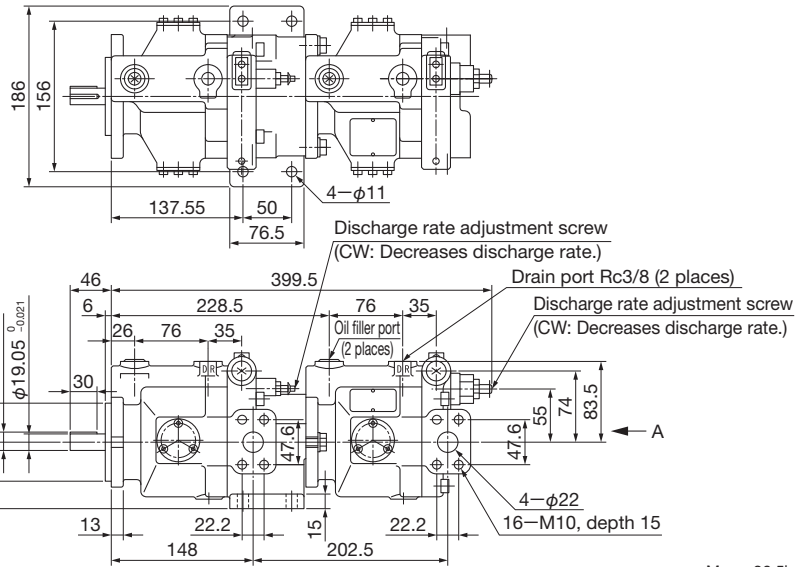
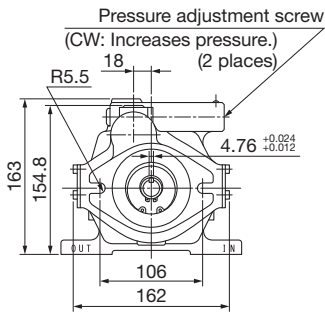
*2: Set the minimum discharge rate at 23 L/min. or more, regardless of rotating speed.

■ Outside dimensions

HPP-VCC2V-L14-14A3A3-B

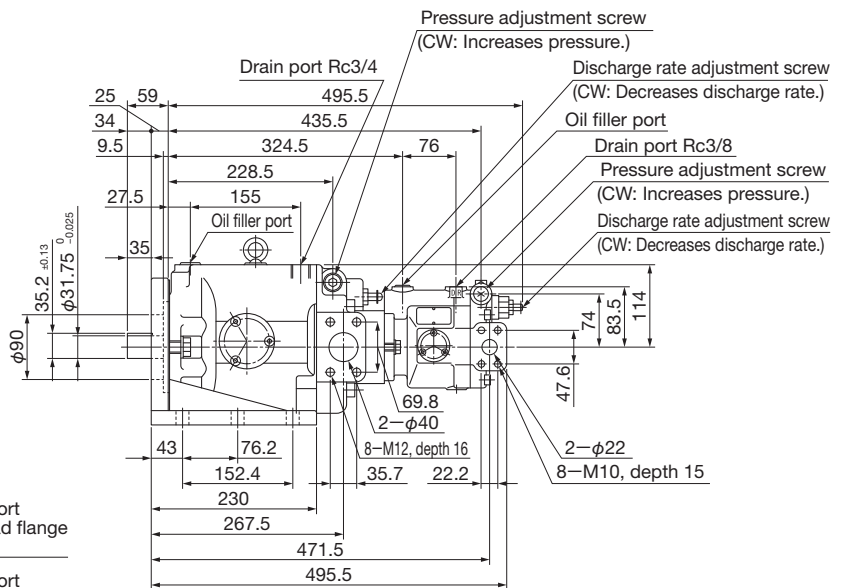
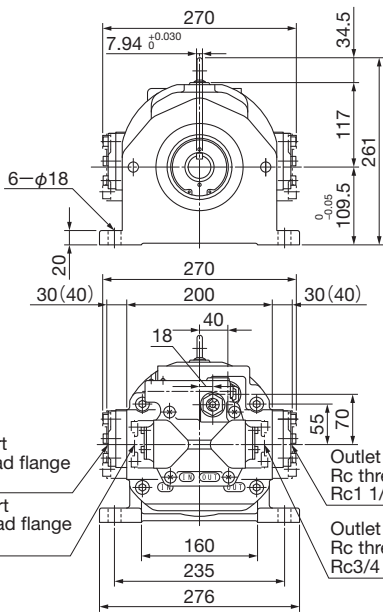


View A



Mass: 26.5kg

HPP-VCF2V-L14-63A*A3-B



Mass: 84.8kg

(Note) Dimension in parentheses indicates the welding flange dimension, dimensions without parentheses indicate Rc thread flange dimension.