



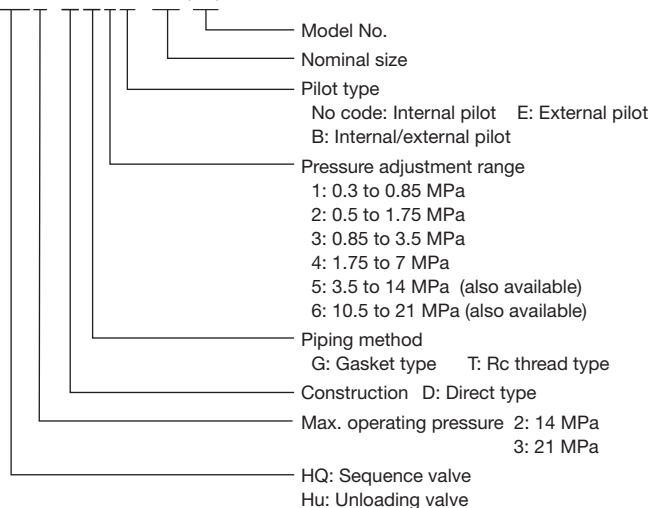
■ Features

This type of valve is used to control the operating sequence of the hydraulic circuit (sequence operation) or to relieve the pump pressure from the loaded state to the unloaded state (unloading operation).

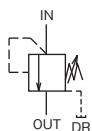
- Sequence valves are classified into three types, namely the internal pilot type, the external pilot type and the internal/external pilot type, according to the source of the pilot pressure.

■ Description of the model designation

HQ3-DG2E-06 (A)

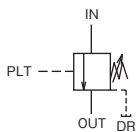


Internal pilot type sequence valve



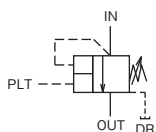
Nominal size	Rated flow rate (L/min)	Max. operating pressure (MPa)	Model	
			Thread joint type	Gasket joint type
02	5	14	—	HQ2-DG*-02A
03	35	21	HQ3-DT*-03	HQ3-DG*-03
06	120		HQ3-DT*-06	HQ3-DG*-06

External pilot type sequence valve



Nominal size	Rated flow rate (L/min)	Max. operating pressure (MPa)	Model	
			Thread joint type	Gasket joint type
02	5	14	—	HQ2-DG*E-02A
03	35	21	HQ3-DT*E-03	HQ3-DG*E-03
06	120		HQ3-DT*E-06	HQ3-DG*E-06

Internal, external pilot type sequence valve



Nominal size	Rated flow rate (L/min)	Max. operating pressure (MPa)	Model	
			Thread joint type	Gasket joint type
03	35	21	HQ3-DT*B-03	HQ3-DG*B-03
06	120		HQ3-DT*B-06	HQ3-DG*B-06

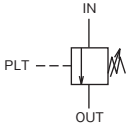
Please note that this type has not the pressure adjustment range of 1: 03 – 0.8 MPa.

Pilot pressure ratio of internal, external pilot type sequence valve

Nominal size	Pilot pressure ratio (Note)	
	Pressure adjustment range code	
	2 to 4	5 to 6
03	1/10	1/18
06	1/10	1/16.5

NOTE: The pilot pressure ratio is the ratio of external pilot pressure relative to the internal pilot pressure.

Unload valve



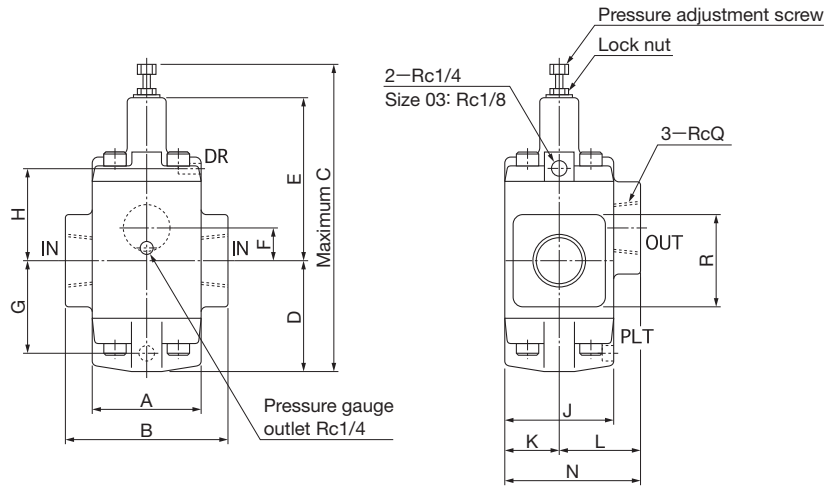
Nominal size	Rated flow rate (L/min)	Max. operating pressure (MPa)	Model	
			Thread joint type	Gasket joint type
03	35	21	HU3-DT*E-03	HU3-DG*E-03
06	120		HU3-DT*E-06	HU3-DG*E-06

Outside dimensions

B

PRESSURE CONTROL VALVES

HQ3-DT**-*
HU3-DT*E-*



Unit: mm NOTE: The unload valve has the internal drain.

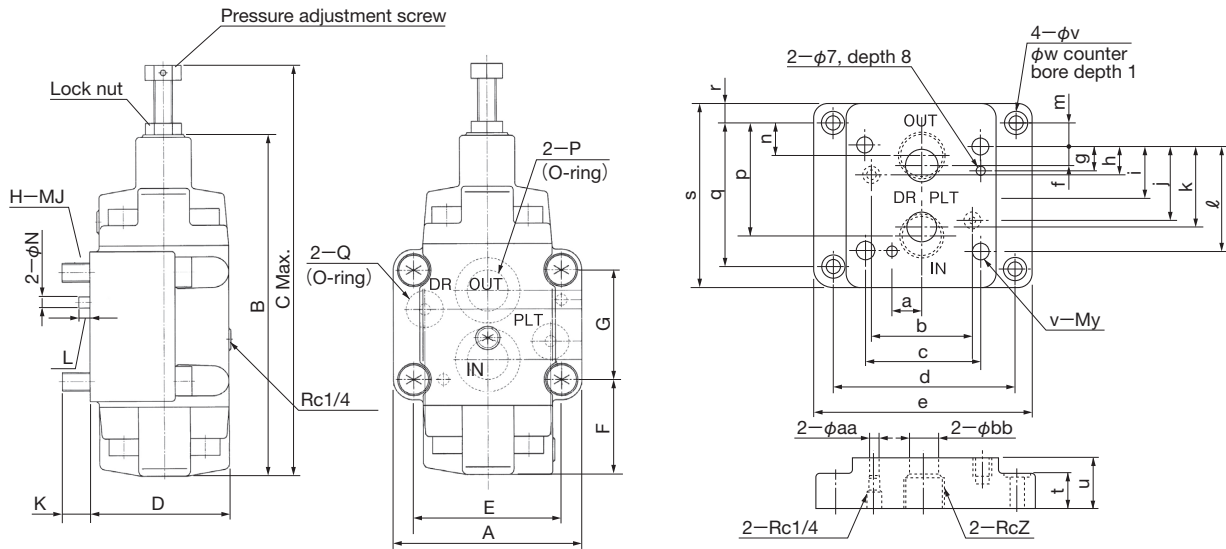
Model	A	B	C	D	E	F	G	H	J	K	L	N	Q	R	Mass (kg)
H*3-DT**-03	62	96	185	56	95	17	45.5	56	62	30	48	78	3/8	54	5
H*3-DT**-06	70	110	221	68.5	115.5	21.5	57.5	66.5	70	35	54	89	3/4	58	6

■ Outside dimensions

HQ3-DG**-*

HU3-DG*E-*

SHQ**-*T1(A)



NOTE: For HQ2-DG*(E)-02A, refer to page B-22.

NOTE: For SHQ**-*T3, refer to page L-5.

Unit: mm

Model	A	B	C	D	E	F	G	H	J	K	L	N	P	Q	Mass (kg)
H*3-DG**-*03	88	151	185	67	67	43	43	4	10	15	6	6	JIS B 2401-1AG21	JIS B2401-1AP11	3.8
H*3-DG**-*06	102	184	221	75	80	50	60	4	10	16	6	6	JIS B 2401-1AG30	JIS B2401-1AP16	5.8

Model	a	b	c	d	e	f	g	h	i	j	k	ℓ	m	n	p	q	r	s	t	u	v	w	x	y	z	aa	bb
SHQ03-03T1	19	51	67	106.4	130	7	11	21.5	-	21.5	36	43	0	5	38	43	11	65	11	25	11	17.5	4	10	3/8	5	14.5
SHQ03-04T1	19	51	67	106.4	130	7	11	21.5	-	21.5	36	43	4.5	7	45	52	11	74	11	30	11	17.5	4	10	1/2	5	14.5
SHQ06-06T1	24	68	80	124	146	11	16	21	-	39	49	60	0	6	54	60	18	96	11	35	11	17.5	4	10	3/4	6	19
SHQ06-08T1	24	68	80	124	146	11	16	21	-	39	49	60	6	7	65	72	18	108	11	43	11	17.5	4	10	1	5	19