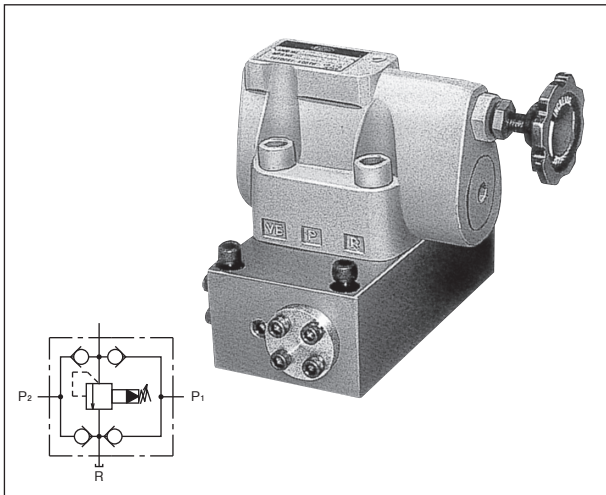


BRAKE VALVE (HR)



A brake valve consists of a relief valve and four check valves assembled in one housing and it is mainly used in the hydraulic motor circuit to apply a brake smoothly by preventing overload and generation of a vacuum in the circuit during acceleration/deceleration.

■ Features

1. One brake valve unit can apply a brake in both the acceleration and deceleration stages.
2. The braking performance can be adjusted by adjusting the setting pressure.

- The cracking pressure of a check valve is 0.04 MPa.
- If a subplate is necessary, please order one separately.

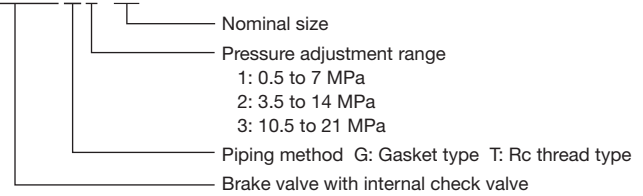
Subplate types:

For size 03: HR-HKG-03-3

For size 06: HR-HKG-06-1

■ Description of the model designation

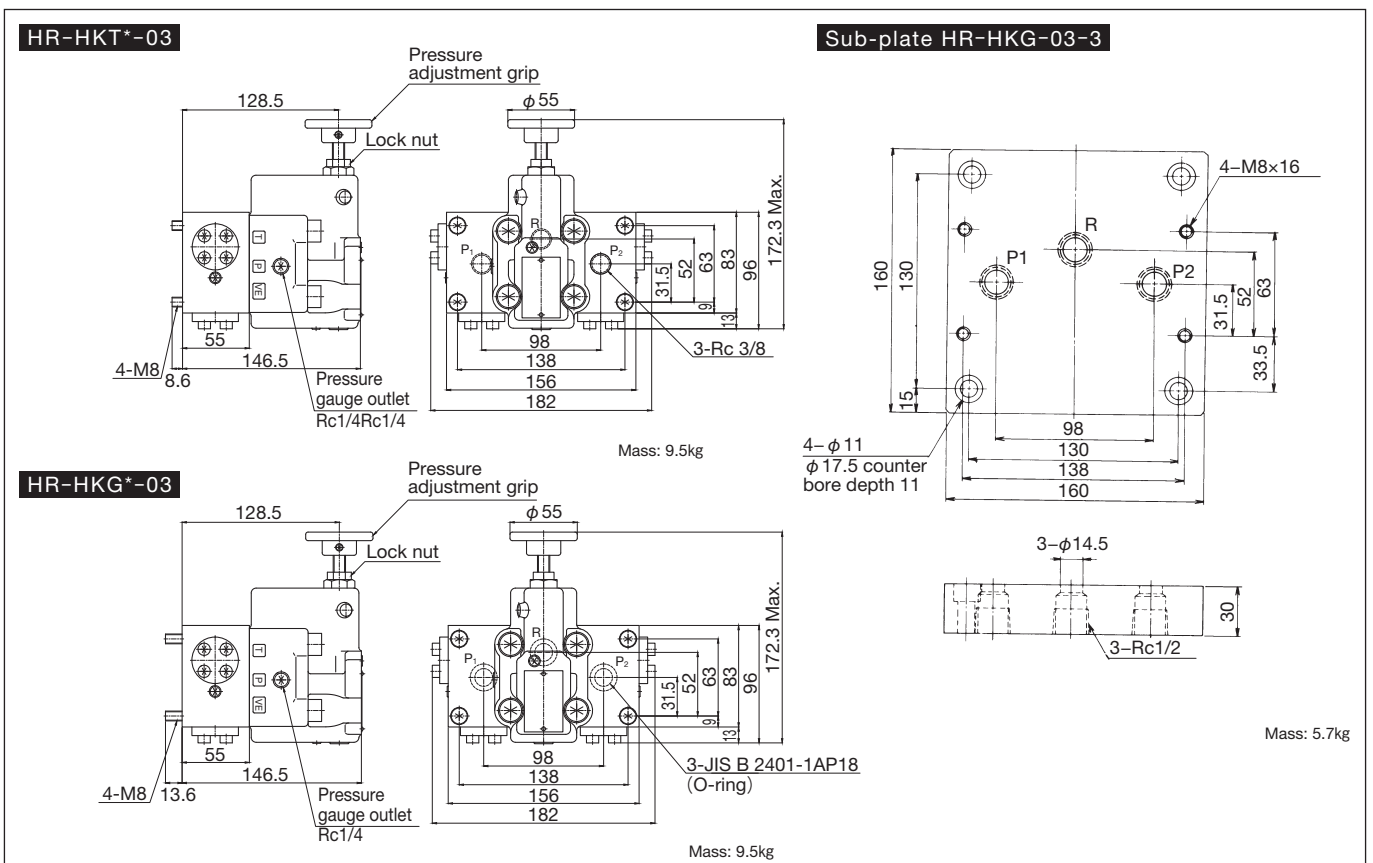
HR-HKG2-03



■ Specifications

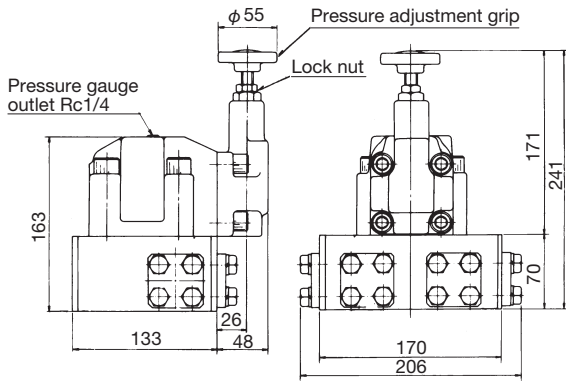
Nominal size	Rated flow rate (L/min)	Max. operating pressure (MPa)	Pressure adjustment range (MPa)	Model	
				Thread joint type	Gasket joint type
03	40	21	0.5 to 7	HR-HKT1-03	HR-HKG1-03
			3.5 to 14	HR-HKT2-03	HR-HKG2-03
			10.5 to 21	HR-HKT3-03	HR-HKG3-03
06	120		0.5 to 7	HR-HKT1-06	HR-HKG1-06
			3.5 to 14	HR-HKT2-06	HR-HKG2-06
			10.5 to 21	HR-HKT3-06	HR-HKG3-06

■ Outside dimensions



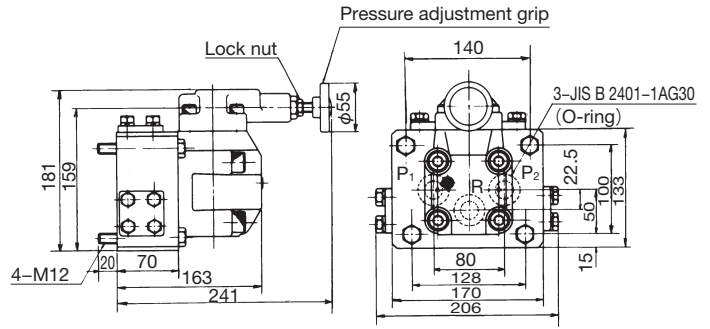
■ Outside dimensions

HR-HKT*-06



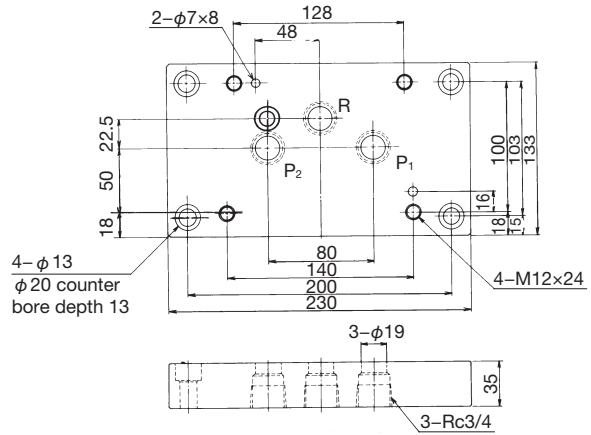
Mass: 18.5kg

HR-HKG*-06



Mass: 18.5kg

Sub-plate HR-HKG-06-1



Mass: 7.8kg