



**Features**

The power package is a compact and light weight hydraulic power source that integrates a motor, hydraulic pump, relief valve, check valve, oil tank, etc.

1. Its smaller power loss is the most suitable to save energy.
2. Compact and light weight design assures simple installation.
3. A safety valve prevents problems related to load.

- The direction of motor rotation is CCW viewed from the cover side. Cables must be connected carefully.
- Operate the unit with the specified amount of hydraulic fluid and within the temperature range of 10 to 60°C.
- Recommended fluid is ISO VG32 when the operating pressure is lower than 7 MPa and ISO VG46 petroleum base fluid when the operating pressure is 7 MPa or higher.
- The relief setting pressure must be lower than the maximum operating pressure.
- The contamination level of the hydraulic fluid must be better than NAS1683 Class 12.

**Specifications**

Motor	Model	Max. operating pressure (MPa)	Displacement under no load (L/min)	
			50Hz	60Hz
AC200V 0.4kW	PSA2-*F1-*00	14	1.4	1.7
	PSA2-*F2-*00	7	2.8	3.4
	PSA2-*F3-*00	4	4.2	5.1
AC200V 0.75kW	PSA2-*G2-*00A	14	2.8	3.4
	PSA2-*G3-*00A	9	4.2	5.1

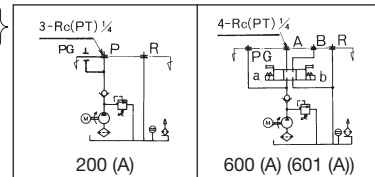
**Description of the model designation**

**PSA2-2.4F1-200 (A)-S\*-(Y)**

- Tank capacity
  - 2.4: 2.4 L
  - 4.6: 4.6 L
  - 10: 10 L (horizontal type is not available)
- Motor capacity
  - F: AC200V, 0.4 KW, 4P
  - G: AC200V, 0.75 KS, 4P
- Pump displacement
  - 1: 1 cm<sup>3</sup>/rev
  - 2: 2 cm<sup>3</sup>/rev
  - 3: 3 cm<sup>3</sup>/rev

- No code: Vertical type
- Y: Horizontal type (the horizontal type for circuit configuration code 600 is specified by 601 instead of the Y designation.)
- Relief setting pressure S1: 1.5 to 7 MPa S2: 3.5 to 14 MPa
- Circuit configuration 200 (A) 600 (A) (601 (A))

**Circuit configuration**



NOTE 1: Specify the model name (including voltage) of the solenoid valve to be used in the hydraulic circuit with configuration code 600. If no specification is given, HD3-3W-BCA-025B-WYR1 (AC100V) is installed.

NOTE 2: If a pressure gauge (for measuring the relief pressure) is to be installed, please specify this.

**Outside dimensions**

**PSA2-2.4F\*-200-S\***

**PSA2-4.6F\*-200-S\***

**PSA2-2.4G\*-200A-S\***

**PSA2-4.6G\*-200A-S\***

(Unit: mm)

Model	A	B	C	D	E	F	G	Mass (kg) (Including oil)
PSA2-2.4F*-200-S*	150	498.0	231.0	180	225	90	135	21.0
PSA2-4.6F*-200-S*	150	616.0	231.0	300	225	90	135	23.5
PSA2-2.4G*-200A-S*	170	528.5	263.5	180	235	90	145	29.5
PSA2-4.6G*-200A-S*	170	648.5	263.5	300	235	90	145	32.0

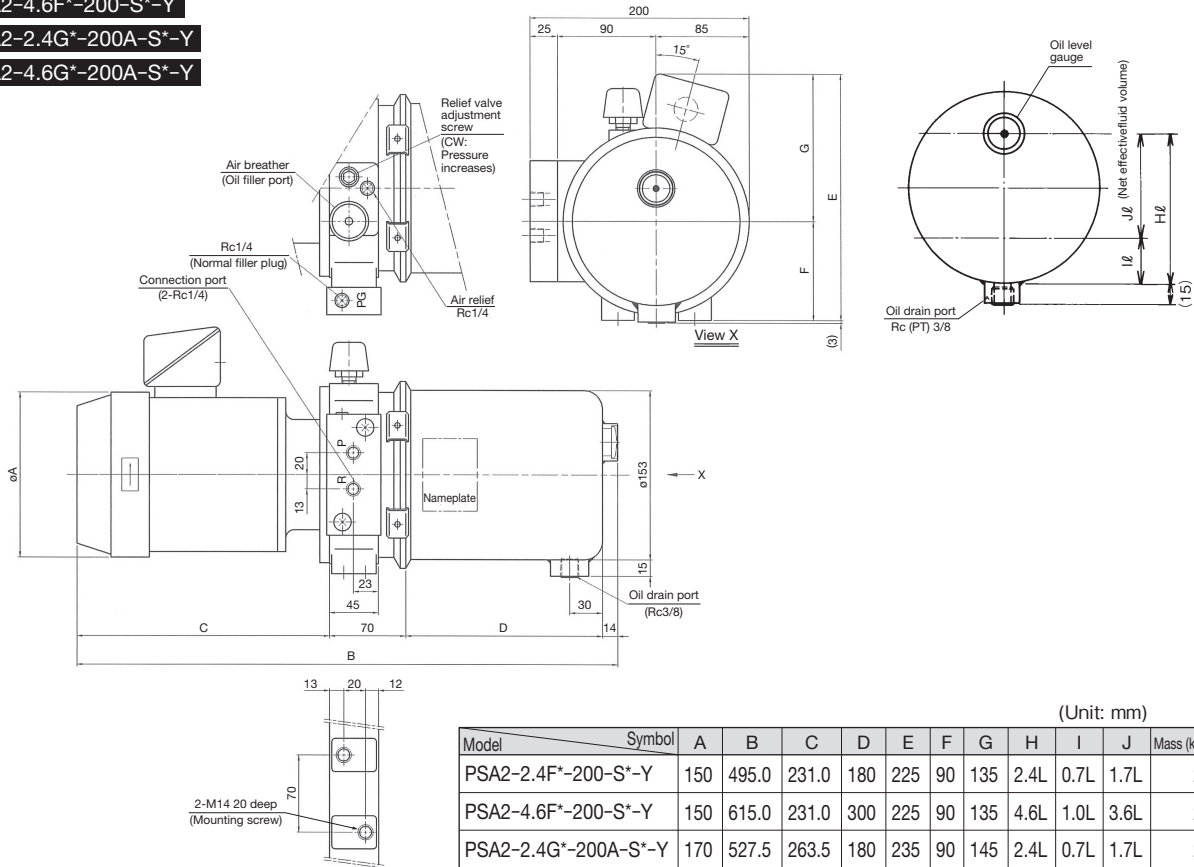
**Outside dimensions**

PSA2-2.4F\*-200-S\*-Y

PSA2-4.6F\*-200-S\*-Y

PSA2-2.4G\*-200A-S\*-Y

PSA2-4.6G\*-200A-S\*-Y



(Unit: mm)

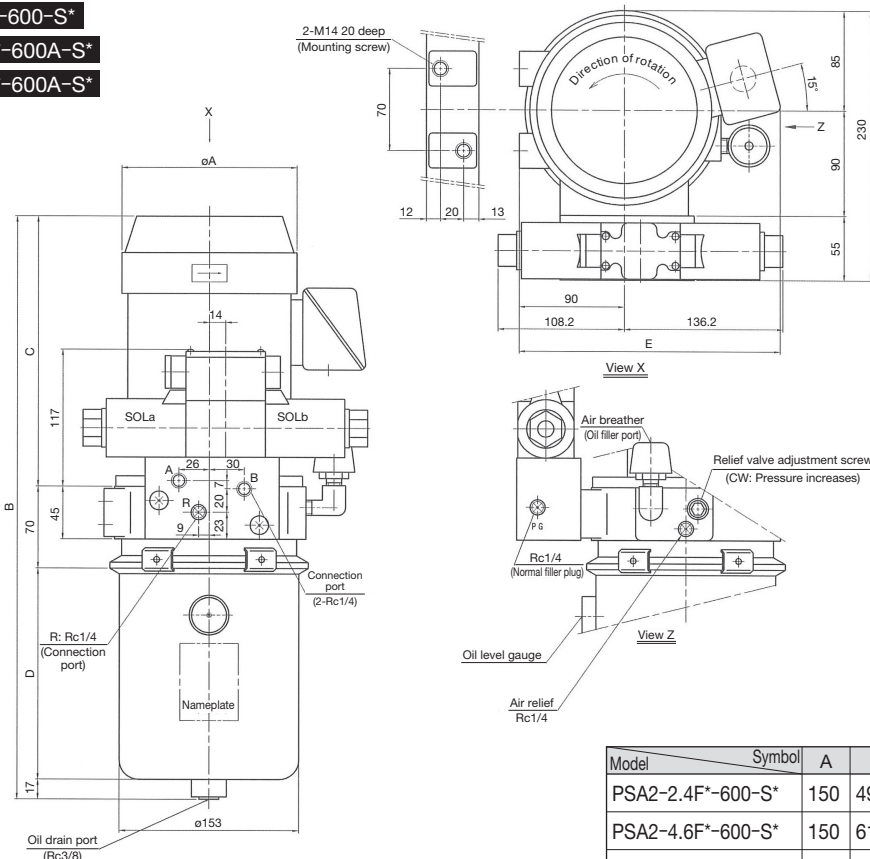
Model	Symbol	A	B	C	D	E	F	G	H	I	J	Mass (kg) (Including oil)
PSA2-2.4F*-200-S*-Y		150	495.0	231.0	180	225	90	135	2.4L	0.7L	1.7L	21.0
PSA2-4.6F*-200-S*-Y		150	615.0	231.0	300	225	90	135	4.6L	1.0L	3.6L	23.5
PSA2-2.4G*-200A-S*-Y		170	527.5	263.5	180	235	90	145	2.4L	0.7L	1.7L	29.5
PSA2-4.6G*-200A-S*-Y		170	647.5	263.5	300	235	90	145	4.6L	1.0L	3.6L	32.0

PSA2-2.4F\*-600-S\*

PSA2-4.6F\*-600-S\*

PSA2-2.4G\*-600A-S\*

PSA2-4.6G\*-600A-S\*



(Unit: mm)

Model	Symbol	A	B	C	D	E	Mass (kg) (Including oil)
PSA2-2.4F*-600-S*		150	498.0	231.0	180	225	24.5
PSA2-4.6F*-600-S*		150	618.0	231.0	300	225	27.0
PSA2-2.4G*-600A-S*		170	530.5	263.5	180	235	33.0
PSA2-4.6G*-600A-S*		170	650.5	263.5	300	235	35.5

K

HYDRAULIC POWER UNITS

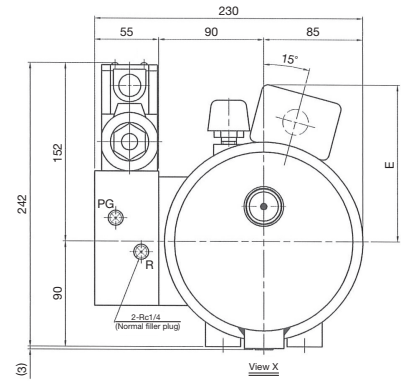
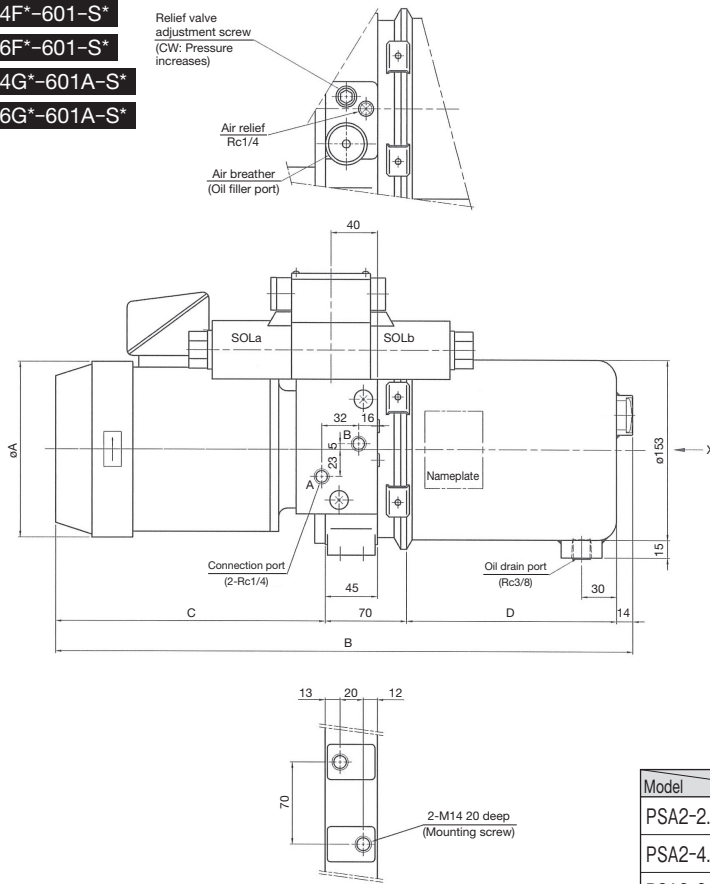
**Outside dimensions**

PSA2-2.4F\*-601-S\*

PSA2-4.6F\*-601-S\*

PSA2-2.4G\*-601A-S\*

PSA2-4.6G\*-601A-S\*

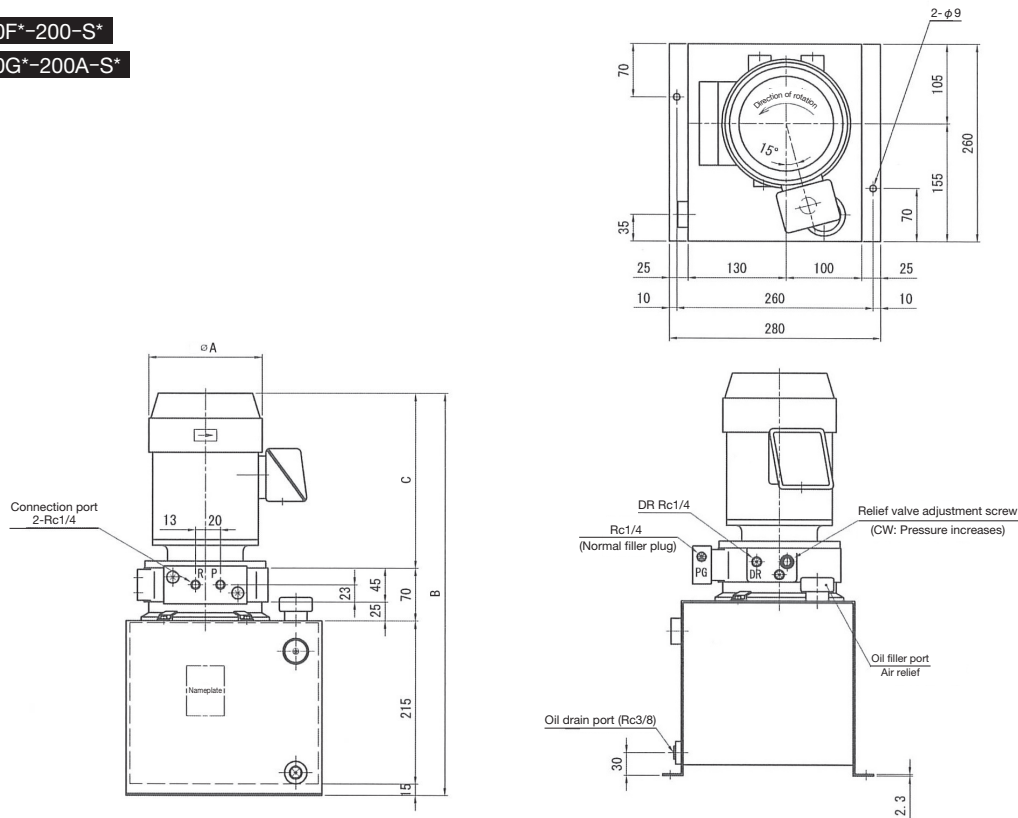


(Unit: mm)

Model	Symbol	A	B	C	D	E	Mass (kg) (Including oil)
PSA2-2.4F*-601-S*		150	495.0	231.0	180	135	24.5
PSA2-4.6F*-601-S*		150	615.0	231.0	300	135	27.0
PSA2-2.4G*-601A-S*		170	527.5	263.5	180	145	33.0
PSA2-4.6G*-601A-S*		170	647.5	263.5	300	145	35.5

PSA2-10F\*-200-S\*

PSA2-10G\*-200A-S\*



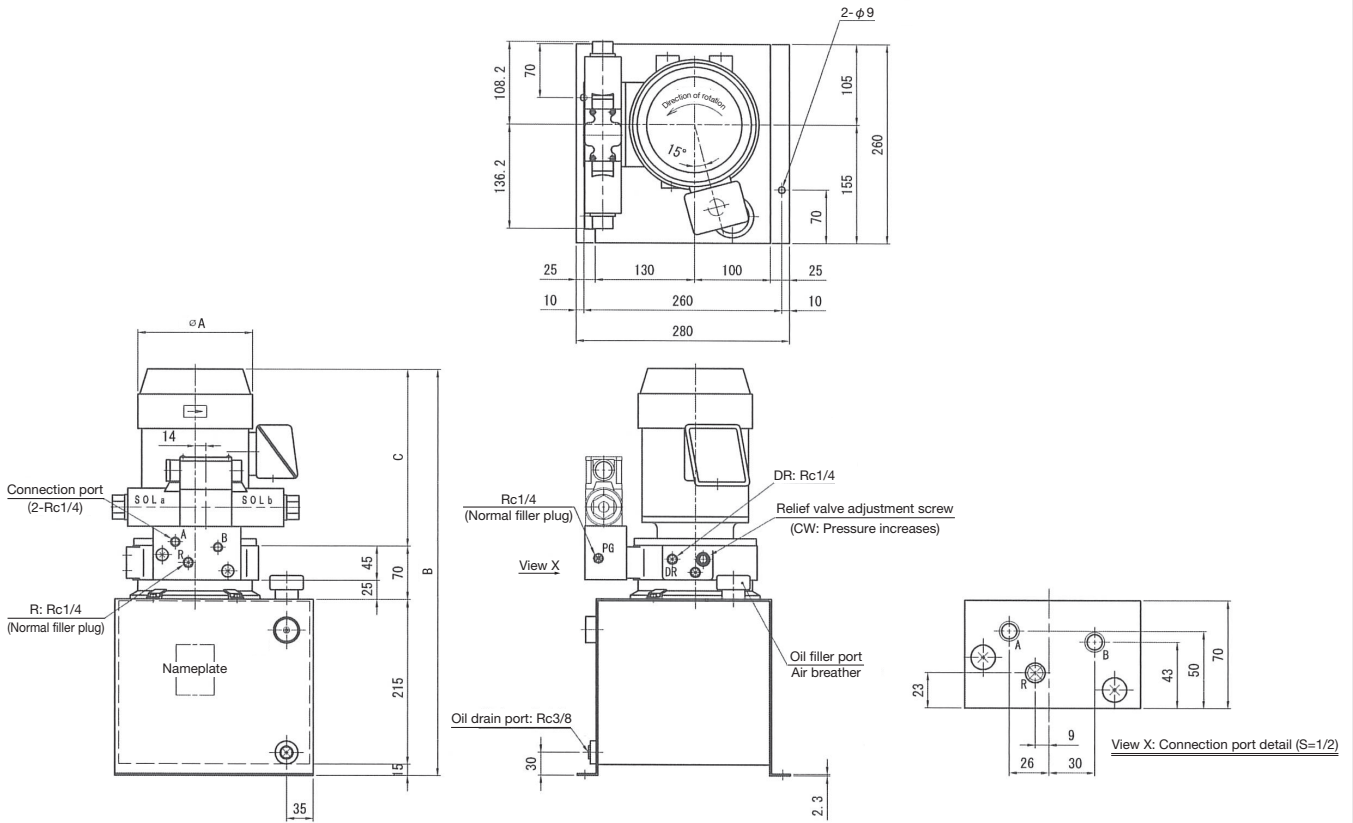
(Unit: mm)

Model	Symbol	A	B	C	Mass (kg) (Including oil)
PSA2-10F*-200-S*		150	531.0	231.0	33.0
PSA2-10G*-200A-S*		170	563.5	263.5	41.5

■ Outside dimensions

PSA2-10F\*-600-S\*

PSA2-10G\*-600A-S\*



(Unit: mm)

Model	Symbol	A	B	C	Mass (kg) (Including oil)
PSA2-10F*-600-S*		150	531.0	231.0	37.0
PSA2-10G*-600A-S*		170	563.5	263.5	45.0