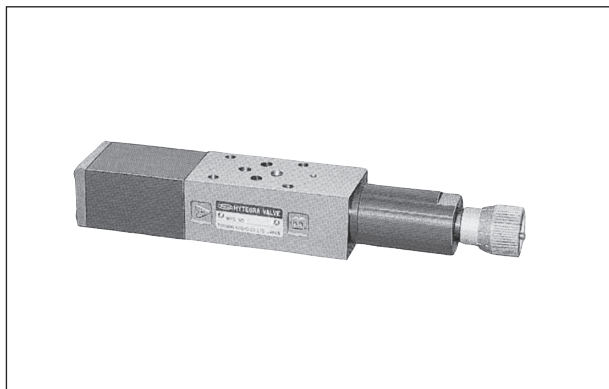


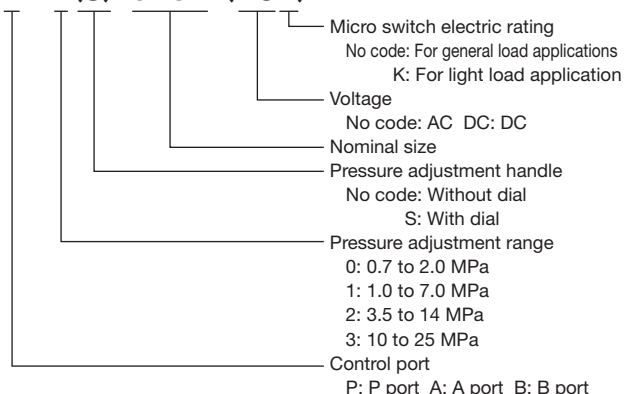
PRESSURE SWITCH (HW3H)



Description of the model designation

Size 025

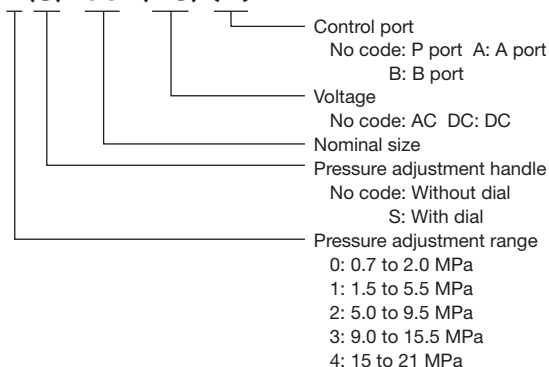
HW3H-P-11(S)-025B-(DCK)



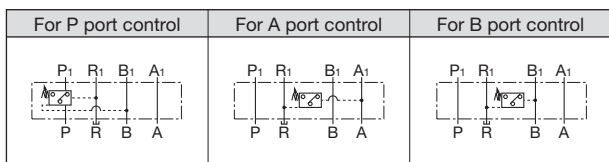
	For light load applications	For general load applications
Micro Switch Electric Rating	DC 5 V to 30 V 1 to 100 mA	DC 5 V to 30 V 0.1 to 4 A

Size 03

HW3H-11(S)-03-(DC) [A]



Symbols



Specifications

Size 025

Controlled port	Model	Max. operating pressure (MPa)	Rated flow rate (L/min)	Max. flow rate (L/min)	Pressure adjustment range (MPa)
P	HW3H-P-1*-025B (-DC*)	25	20	40	* symbol 0: 0.7 to 2 1: 1 to 7 2: 3.5 to 14 3: 10 to 25
	HW3H-P-1*S-025B (-DC*)				
A	HW3H-A-1*-025B (-DC*)				
	HW3H-A-1*S-025B (-DC*)				
B	HW3H-B-1*-025B (-DC*)				
	HW3H-B-1*S-025B (-DC*)				

NOTE: When operating with DC power, specify the micro switch code at the end of model designation as indicated below.

For general load application: "-DC"

For light load application: "-DCK"

Size 03

Controlled port	Model	Max. operating pressure (MPa)	Rated flow rate (L/min)	Max. flow rate (L/min)	Pressure adjustment range (MPa)
P	HW3H-1*-03 (-DC)	21	40	80	* symbol 0: 0.7 to 2 1: 1.5 to 5.5 2: 5 to 9.5 3: 9 to 15.5 4: 15 to 21
	HW3H-1*S-03 (-DC)				
A	HW3H-1*-03 (-DC) [A]				
	HW3H-1*S-03 (-DC) [A]				
B	HW3H-1*-03 (-DC) [B]				
	HW3H-1*S-03 (-DC) [B]				

Operating voltage range (Common To Size 025 And 03)

AC (V)	100 to 240
DC (V)	12 to 24

NOTE 1: Do not use HW3H-1*(S)-025B-DC (for general load application) and HW3H-1*(S)-03-DC (*) with a small current. This will cause contact failure.

NOTE 2: For cable connection, use a sealed connector and tighten the mounting screws of the plastic cover with a torque of approximately 1 N·m. If the sealing is imperfect, silicon gas in the atmosphere will enter the pressure switch, causing contact failure of the micro switch.

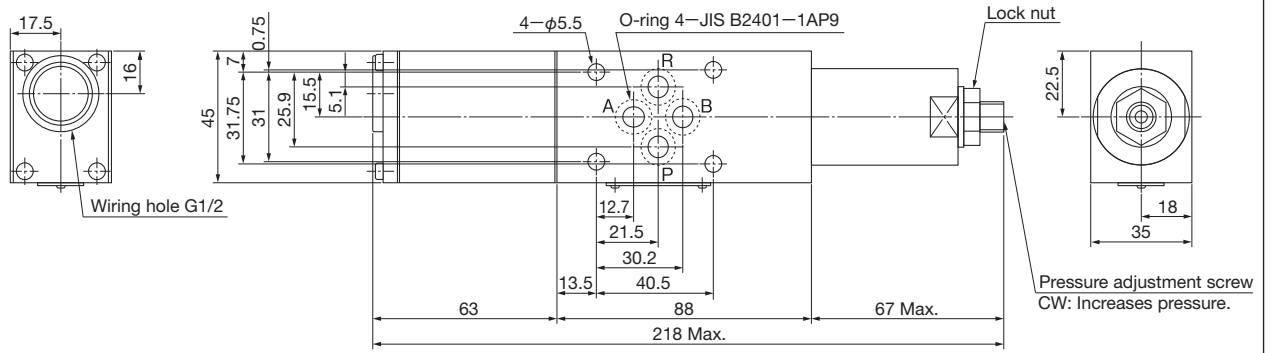
NOTE 3: To ensure high contact reliability, secure a pressure difference of at least 0.5 MPa between the source pressure and the setting pressure.

■ Outside dimensions

HW3H-P-1*-025B (-DC*)

HW3H-A-1*-025B (-DC*)

HW3H-B-1*-025B (-DC*)

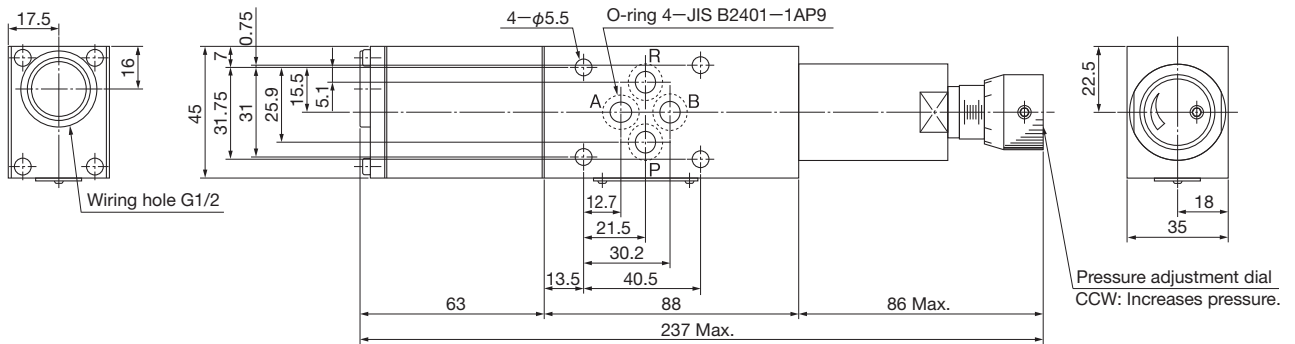


Mass: 1.20kg

HW3H-P-1*S-025B (-DC*)

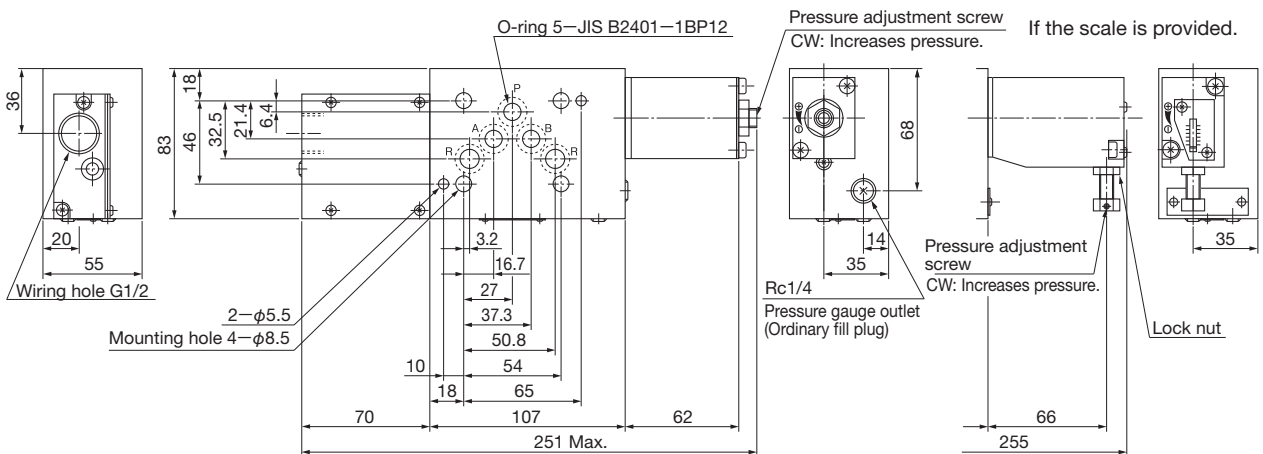
HW3H-A-1*S-025B (-DC*)

HW3H-B-1*S-025B (-DC*)



Mass: 1.26kg

HW3H-1*(S)-03(-DC) (*)



Mass: 4.5kg