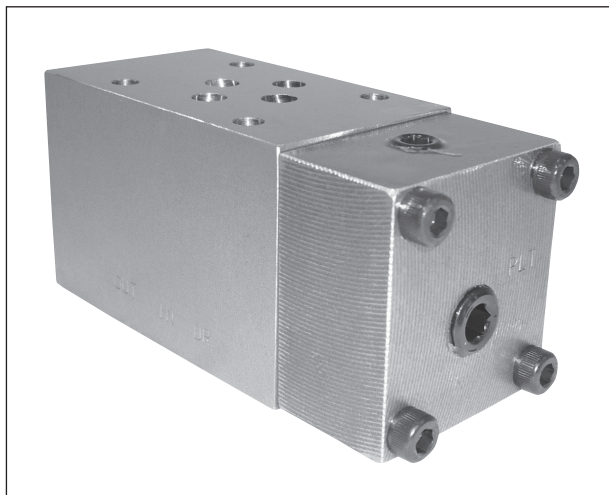


PILOT-OPERATED CHECK VALVE FOR BALANCING VALVE (HK2M)



Features

This valve is used to prevent the balancing cylinder in the balancing circuit that uses the HY-TEGRA manifold mount-type balancing valve from falling, thereby protecting the servomotor and the ball screw.

- HK2M-GY*G (E)-**(B) is used together with HGR2M-BG*-(B).
- To use HK2M-GY*G (E)-**(B), plug B port of the manifold or the subplate.
- HK2M-GY*G (E)D-**(B) is used together with HGR2M-BG*D-**(B).
- The mounting bolts necessary for using the valve together with HGR2M-BG* D-**(B) are supplied with the valve (M5 × 115 for size 025B, M8 × 120 for size 03).

Description of the model designation

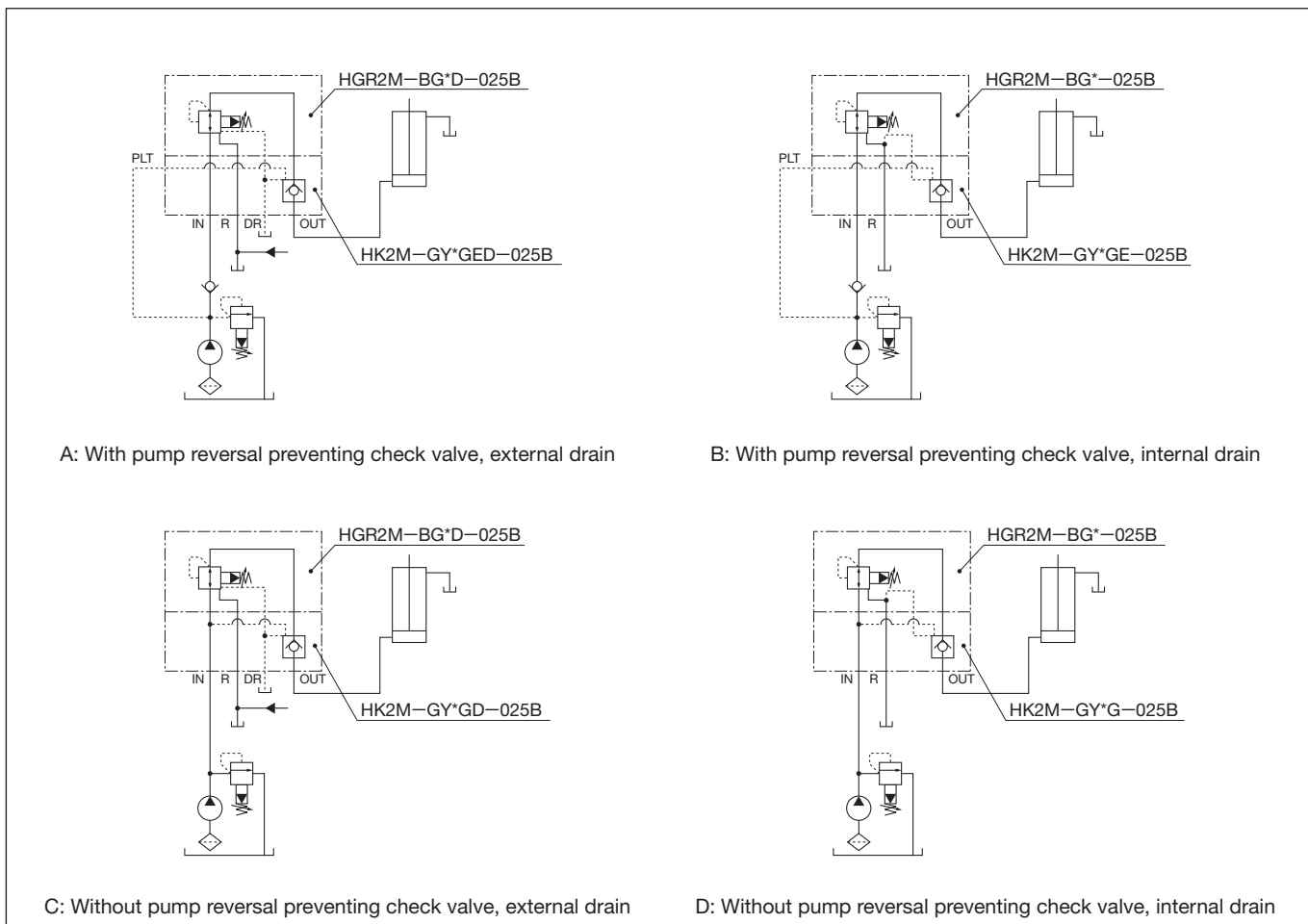
HK2M-GY1G (E) (D)-025B

- Check valve
- Max. operating pressure: 2: 14 MPa, check valve
- Pilot operation type
- Cracking pressure
- Nominal size: 025B, 03
- Drain type: No code: Internal drain; D: External drain
- Pilot type: No code: Internal pilot; E: External pilot

Specifications

	Drain type	Model	Max. operating pressure (MPa)	Rated flow rate (L/min)	Max. flow rate (L/min)	Cracking pressure (MPa)	Symbol	
Internal pilot	Internal drain	HK2M-GY*G-025B	14	20	40	* symbol		
		HK2M-GY*G-03		40	80			
	External drain	HK2M-GY*GD-025B		20	40			
		HK2M-GY*GD-03		40	80			
External pilot	Internal drain	HK2M-GY*GE-025B		20	40		4: 0.53	
		HK2M-GY*GE-03		40	80			
	External drain	HK2M-GY*GED-025B		20	40			
		HK2M-GY*GED-03		40	80			

Example of use with balancing valve (Balancing valve + Pilot-operated check valve)

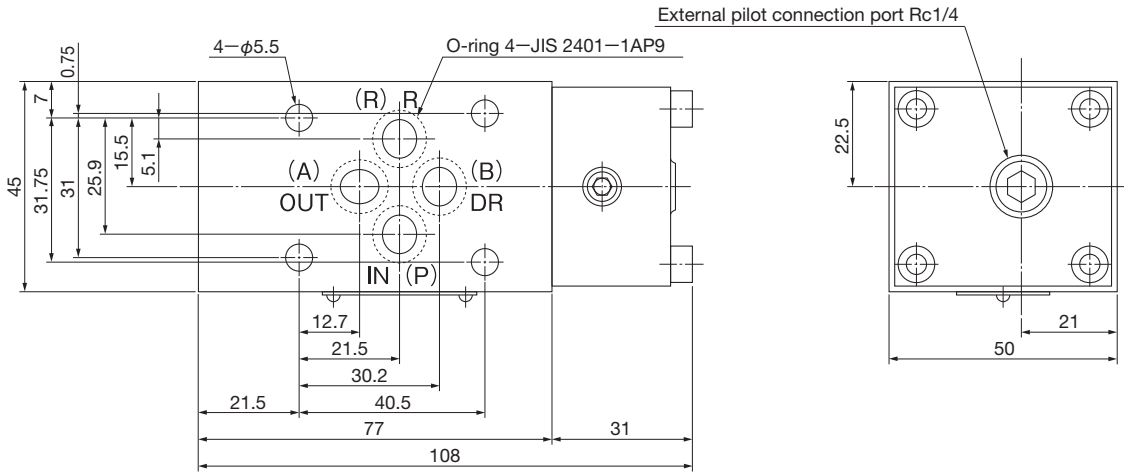


D

HY-TEGRA SYSTEM

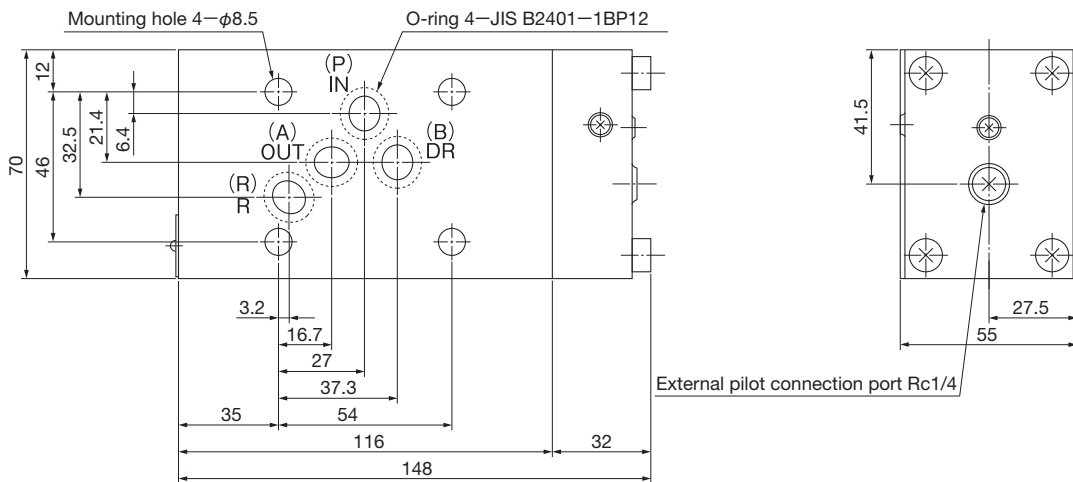
■ Outside dimensions

HK2M-GY*G (E) (D)-025B



Mass: 1.59kg

HK2M-GY*G (E) (D)-03



Mass: 4.5kg

D

HY-TEGRA SYSTEM