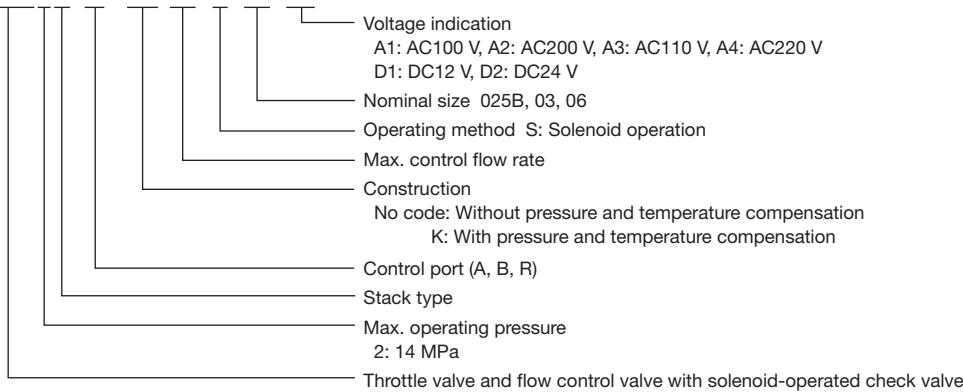


D

HY-TEGRA SYSTEM

■ Description of the model designation

HFK2H-A-(K) 12-S-03-A1



- When controlling the R port, limit pressure to the control port (R1) to less than the permissible back pressure of solenoid valve.
- Although this valve can be installed at any position of HMD-*03-04T* manifold without interfering with adjacent valve, if cables cannot be connected, remove the solenoid before connecting cables.
- Direction of DIN terminal can be changed by 180-deg by removing and re-inserting the locating pin.

■ Solenoid characteristics

AC

Model	M01-AC100-D-TK	M01-AC200-D-TK	M01-AC110-D-TK	M01-AC220-D-TK
Rated Voltage (V)	AC100 50Hz	AC100 60Hz	AC200 50Hz	AC200 60Hz
Starting current (A)	2.66	2.35	1.33	1.18
Holding current (A)	0.58	0.43	0.29	0.22
Power consumption (W)	25.0	20.8	25.0	20.8

DC

Model	M01-DC12-D-TK	M01-DC24-D-TK
Rated Voltage (V)	DC12	DC24
Holding current (A)	2.35	1.22
Power consumption (W)	28.2	29.3

Specifications

Throttle valve

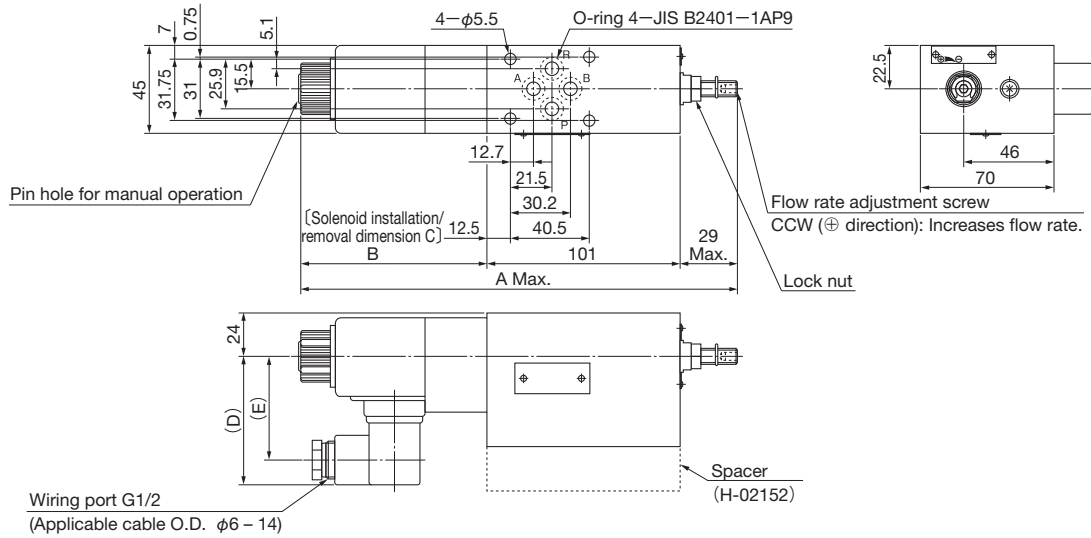
Control port	Model	Max. operating pressure (MPa)	Rated flow rate (L/min)	Flow rate adjustment range (L/min)	Min. flow for rapid feed (L/min)	Symbol
A	HFK2H-A-40-S-025B-A _D *	14	20	0.5 to 40	5	
	HFK2H-A-80-S-03-A _D *		30	0.5 to 80		
	HFK2H-A-190-S-06-A _D *		120	1 to 190		
B	HFK2H-B-40-S-025B-A _D *		20	0.5 to 40		
	HFK2H-B-80-S-03-A _D *		30	0.5 to 80		
	HFK2H-B-190-S-06-A _D *		120	1 to 190		
R	HFK2H-R-40-S-025B-A _D *		20	0.5 to 40		
	HFK2H-R-80-S-03-A _D *		30	0.5 to 80		

Flow Control Valve with Pressure and Temperature Compensation

Control port	Model	Max. operating pressure (MPa)	Rated flow rate (L/min)	Flow rate adjustment range (L/min)	Min. flow for rapid feed (L/min)	Symbol
A	HFK2H-A-K6-S-025B-A _D *	14	20	0.3 to 6	5	
	HFK2H-A-K12-S-03-A _D *		30	0.1 to 12		
B	HFK2H-B-K6-S-025B-A _D *		20	0.3 to 6		
	HFK2H-B-K12-S-03-A _D *		30	0.1 to 12		
R	HFK2H-R-K6-S-025B-A _D *		20	0.3 to 6		
	HFK2H-R-K12-S-03-A _D *		30	0.1 to 12		

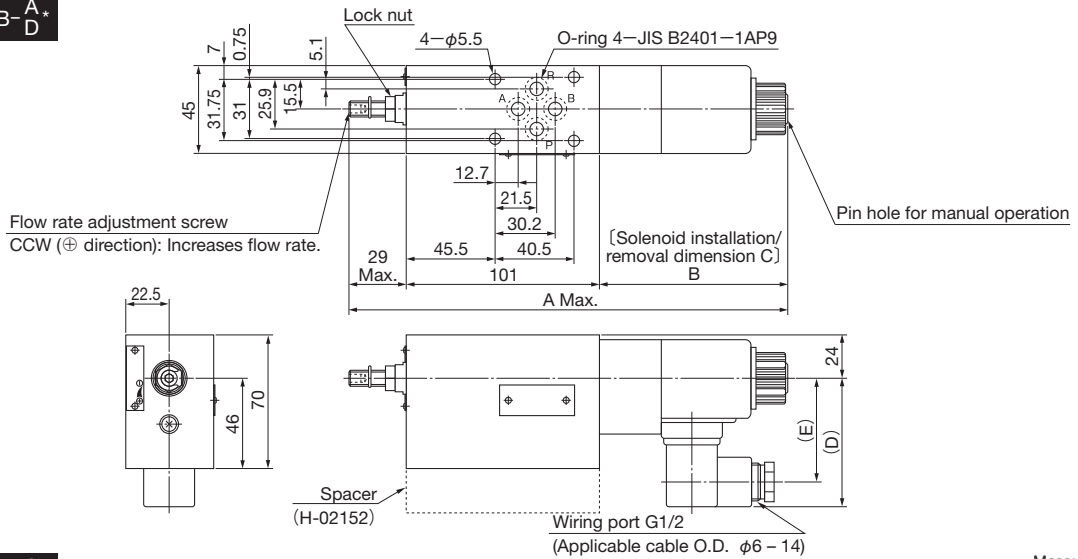
■ Outside dimensions

HFK2H-A-40-S-025B-A*
D



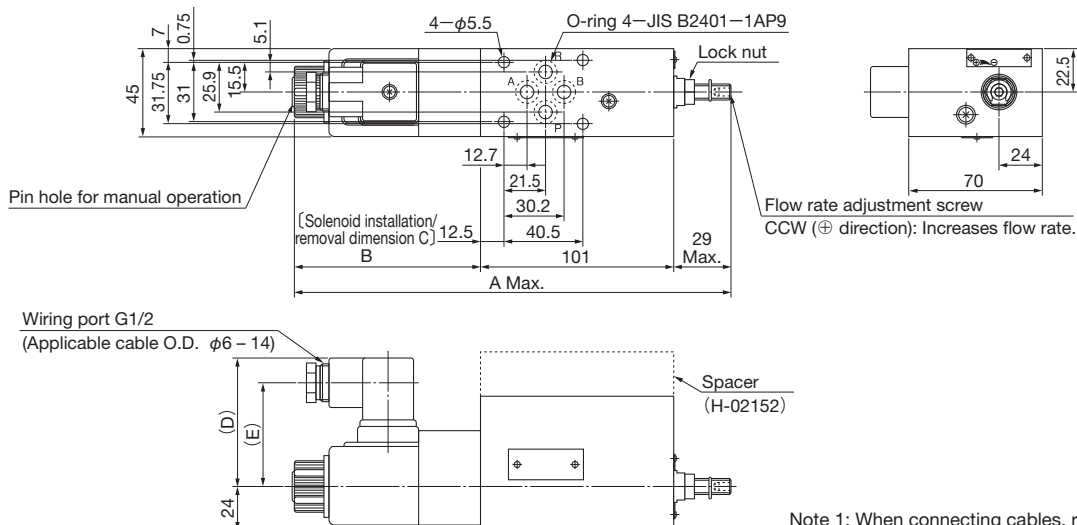
Mass: 3.0kg

HFK2H-B-40-S-025B-A*
D



Mass: 3.0kg

HFK2H-R-40-S-025B-A*
D



Mass: 3.0kg

■ Dimension table

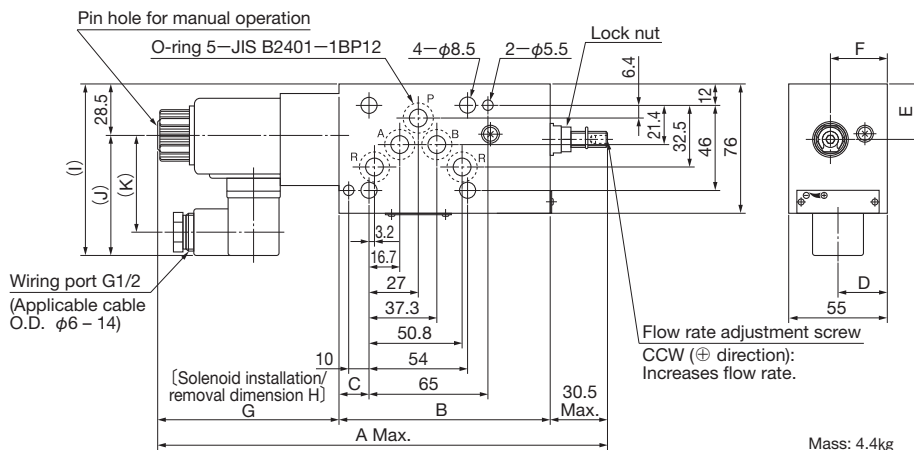
Model	A	B	C	D	E
HFK2H*-40-S-025B-A*	225	95	139	65	53
HFK2H*-40-S-025B-D*	234	104	157	68	56

Unit: mm

- Note 1: When connecting cables, remove the solenoid if there is an adjacent valve.
- Note 2: The solenoid direction can be switched (180-deg.) by removing and re-inserting the locating pin.
- Note 3: The wiring connector may interfere with other valves depending on the order of stacking. If interference occurs, use a spacer (H-02152, 35 mm thick).

Outside dimensions

HFK2H-A-80-S-03-A*



Mass: 4.4kg

Dimension table

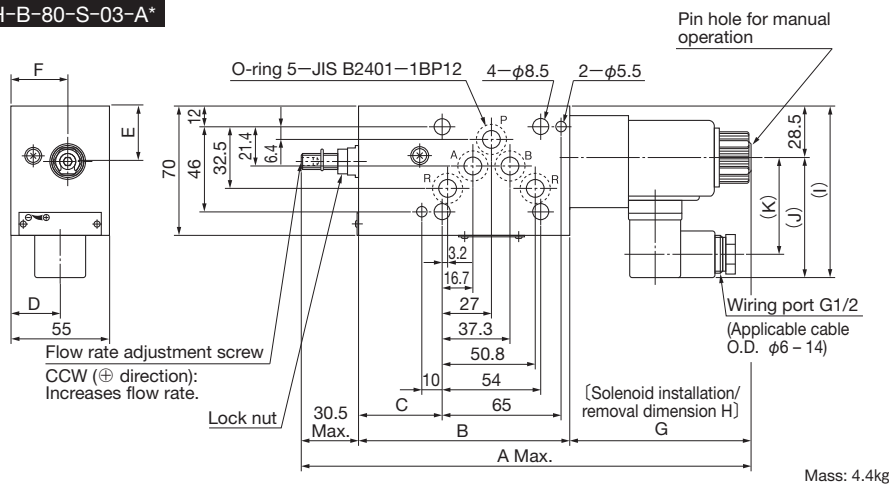
Unit: mm

Model	A	B	C	D
HFK2H-A-80-S-03-A*	242.5	117	17	26
HFK2H-B-80-S-03-A*	242.5	117	46	26
HFK2H-R-80-S-03-A*	259.4	134	33	29
HFK2H-A-80-S-03-D*	251.5	117	17	26
HFK2H-B-80-S-03-D*	251.5	117	46	26
HFK2H-R-80-S-03-D*	276	134	33	29

Model	E	F	G	H
HFK2H-A-80-S-03-A*	30	31	95	139
HFK2H-B-80-S-03-A*	30	31	95	139
HFK2H-R-80-S-03-A*	27	35	95	139
HFK2H-A-80-S-03-D*	30	31	104	157
HFK2H-B-80-S-03-D*	30	31	104	157
HFK2H-R-80-S-03-D*	27	35	104	157

Model	I	J	K
HFK2H-A-80-S-03-A*	93.2	65	53
HFK2H-B-80-S-03-A*	93.2	65	53
HFK2H-R-80-S-03-A*	93.2	65	53
HFK2H-A-80-S-03-D*	96.2	68	56
HFK2H-B-80-S-03-D*	96.2	68	56
HFK2H-R-80-S-03-D*	96.2	68	56

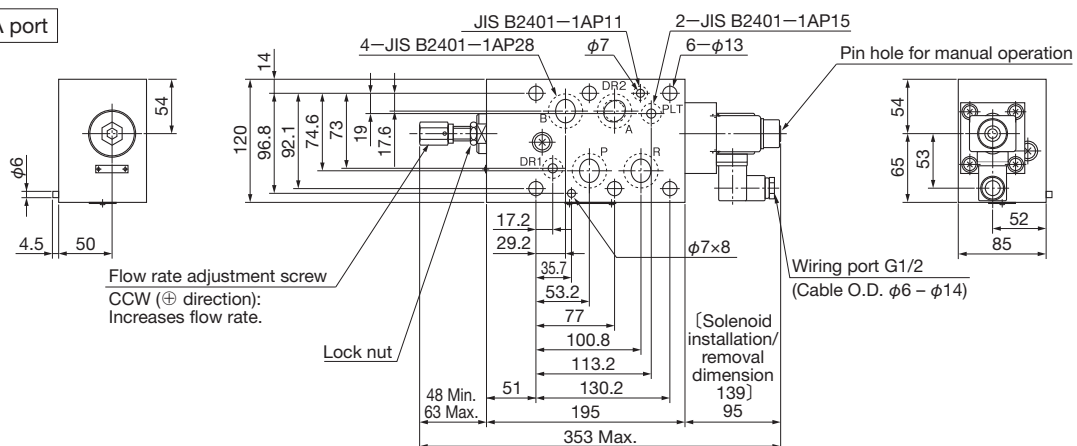
HFK2H-B-80-S-03-A*



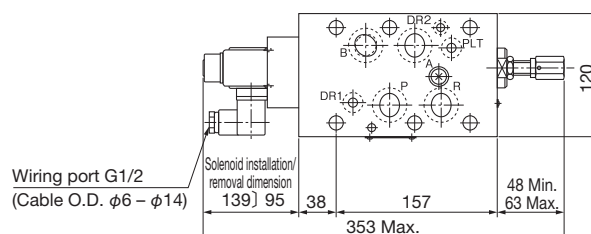
Mass: 4.4kg

HFK2H- \pm -190-S-06-A*

For A port



For B port



Mass: 14.4kg

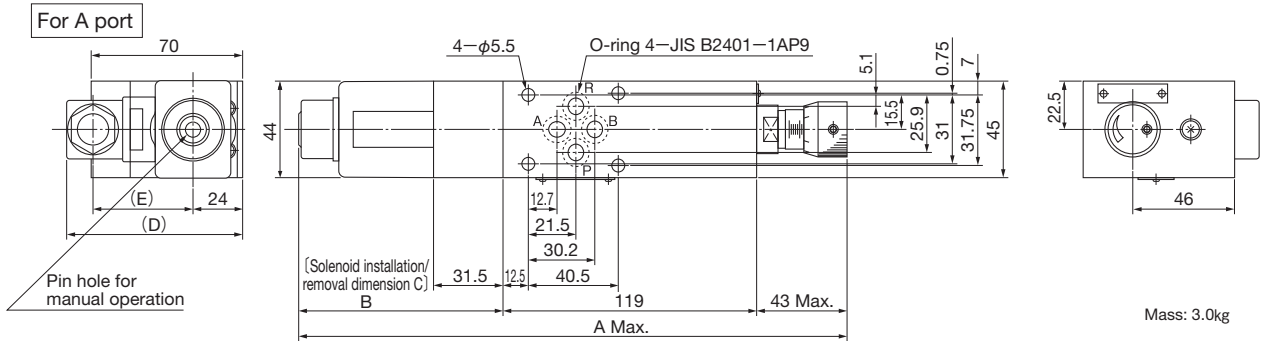
D

HY-TEGRA SYSTEM

■ Outside dimensions

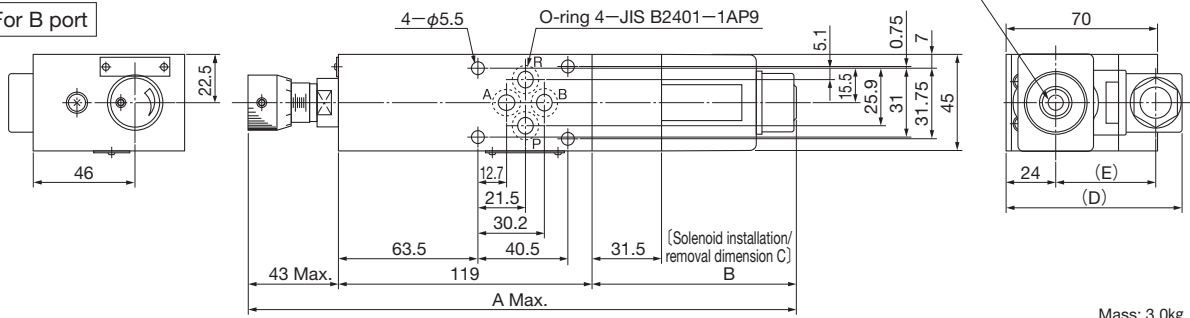
HFK2H-A-K6-S-025B-A*
D*

HFK2H-B-K6-S-025B-A*
D*



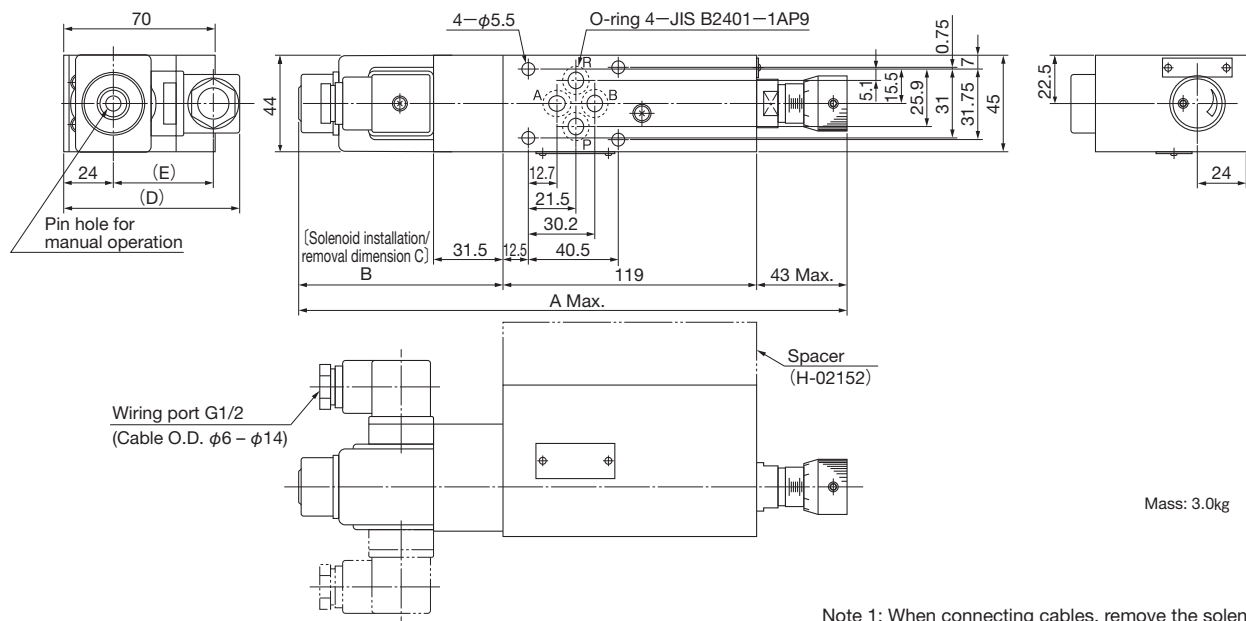
Mass: 3.0kg

For B port



Mass: 3.0kg

HFK2H-R-K6-S-025B-A*
D*



Mass: 3.0kg

■ Dimension table

Model	A	B	C	D	E
HFK2H-*K6-S-025B-A*	257	95	139	89	53
HFK2H-*K6-S-025B-D*	266	104	157	92	56

Unit: mm

Note 1: When connecting cables, remove the solenoid if there is an adjacent valve.

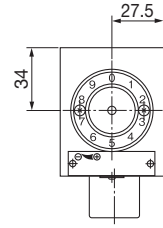
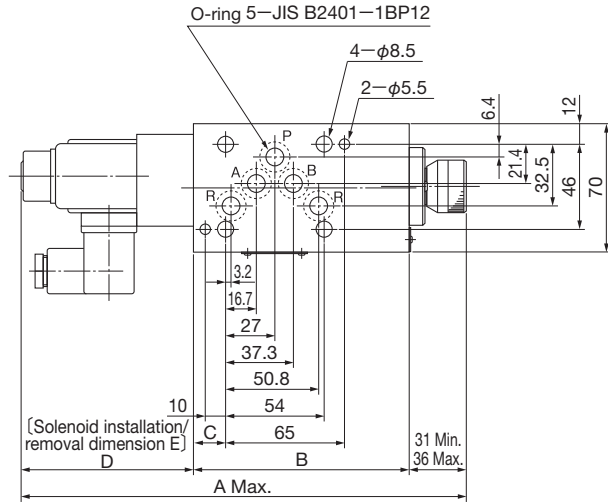
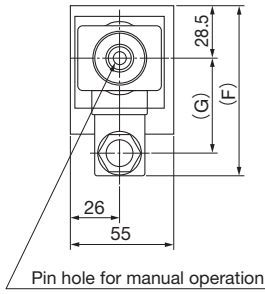
Note 2: The solenoid direction can be switched (180-deg.) by removing and re-inserting the locating pin.

Note 3: The wiring connector may interfere with other valves depending on the order of stacking. If interference occurs, use a spacer (H-02152, 35 mm thick).

■ Outside dimensions

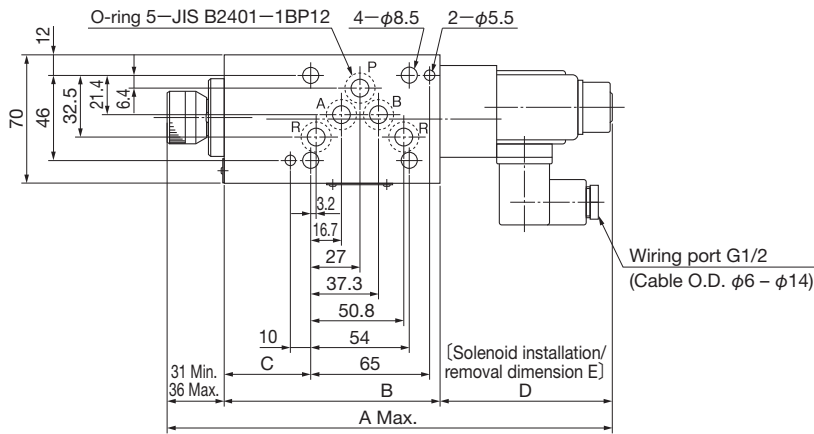
HFK2H-^{*}K12-S-03-^A_D

For A port
For R port



Mass: 4.4kg

For B port



Mass: 4.4kg

■ Dimension table

Unit: mm

Model	A	B	C	D	E	F	G
HFK2H-A-K12-S-03-A*	248	117	17	95	139	93.2	53
HFK2H-B-K12-S-03-A*	248	117	46	95	139	93.2	53
HFK2H-R-K12-S-03-A*	265	134	33	95	139	93.2	53
HFK2H-A-K12-S-03-D*	257	117	17	104	157	96.2	56
HFK2H-B-K12-S-03-D*	257	117	46	104	157	96.2	56
HFK2H-R-K12-S-03-D*	274	134	33	104	157	96.2	56