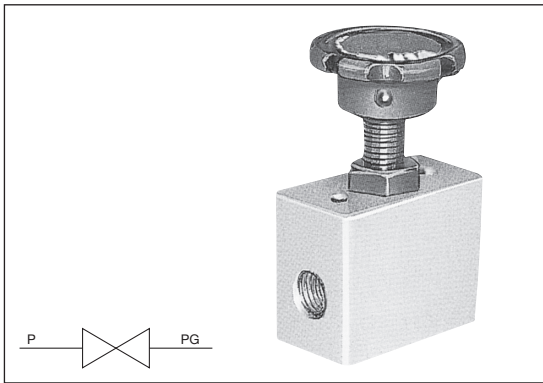


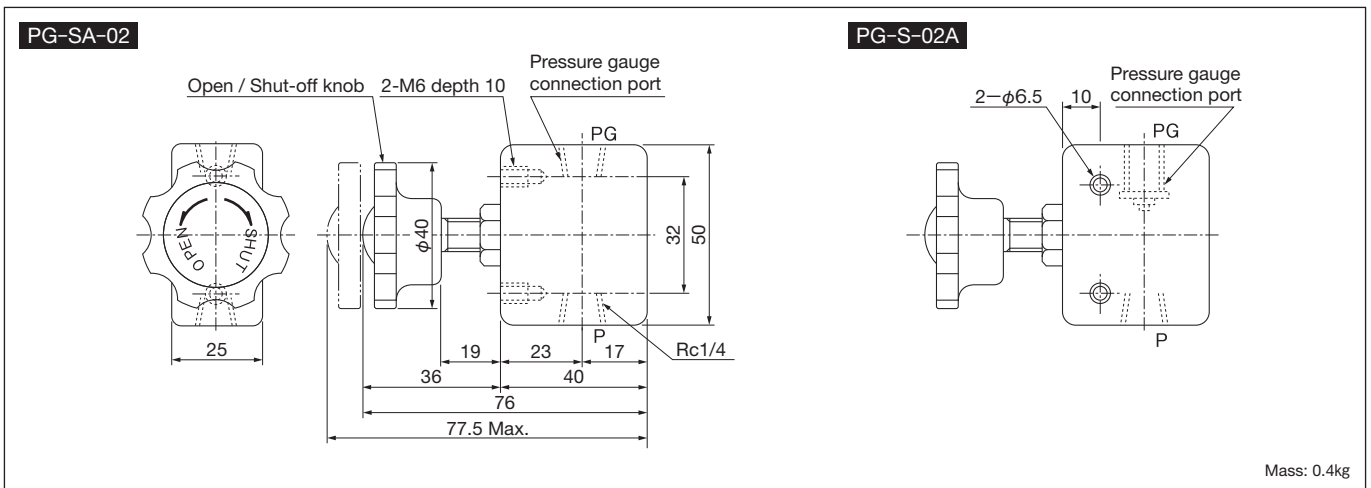
STOP VALVE FOR PRESSURE GAUGE (PG) (Type S and SA)



The stop valve allows through or shuts off the hydraulic fluid flow to the pressure gauge.

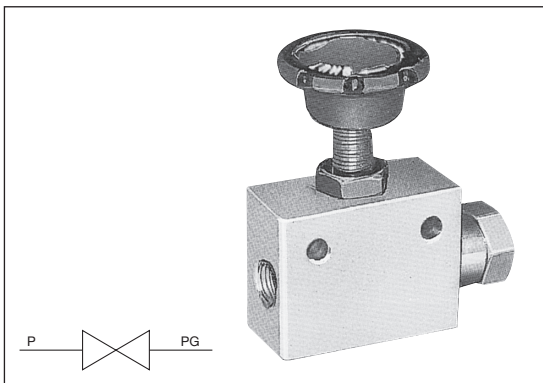
Nominal size	02	
Type	For Rc thread	For G thread
Model	PG-SA-02	PG-S-02A
Connecting pipe diameter (PG)	Rc1/4	G1/4
Connecting pipe diameter (P)	Rc1/4	
Max. Operating pressure (Mpa)	21	

Outside dimensions



Mass: 0.4kg

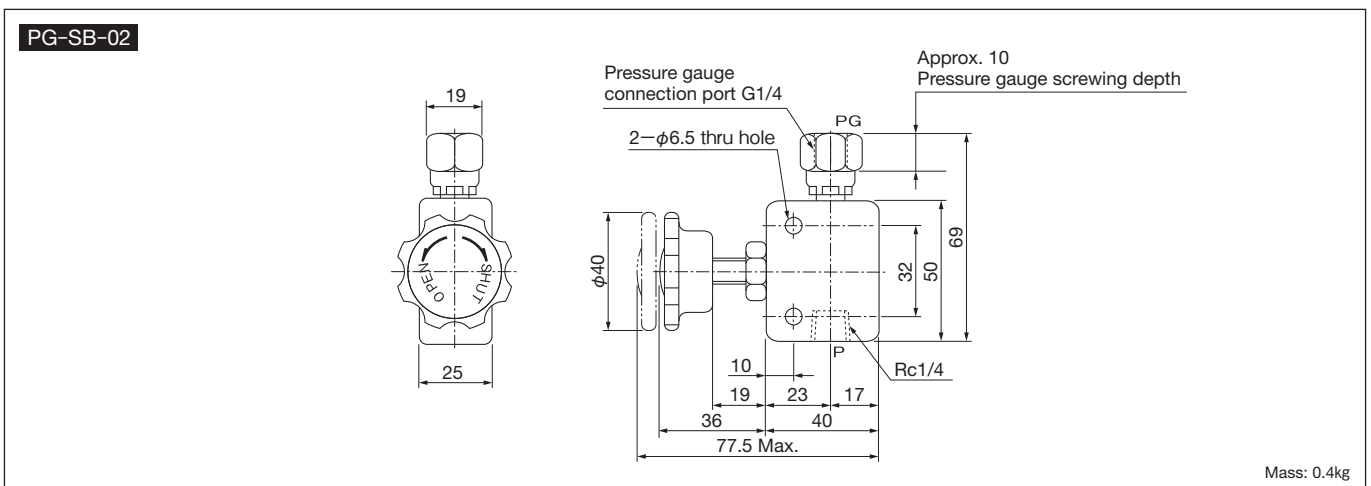
STOP VALVE FOR PRESSURE GAUGE (PG) (Type SB)



The SB type stop valve for the pressure gauge has a joint so that the gauge indicator face can be set in the desired direction.

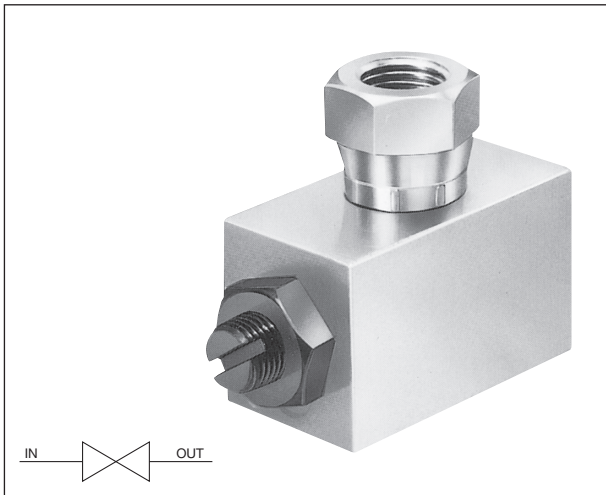
Nominal size	02	
Type	For G thread	
Model	PG-SB-02	
Connecting pipe diameter (PG)	G1/4	
Connecting pipe diameter (P)	Rc1/4	
Max. Operating pressure (Mpa)	21	

Outside dimensions



Mass: 0.4kg

STOP VALVE FOR PRESSURE GAUGE (PG) (Type SC)



Specifications

Nominal size	02
Type	For G thread
Model	PG-SC-02
Connecting pipe diameter (PG)	G1/4
Connecting pipe diameter (P)	Rc1/4
Max. Operating pressure (Mpa)	21

Outside dimensions

